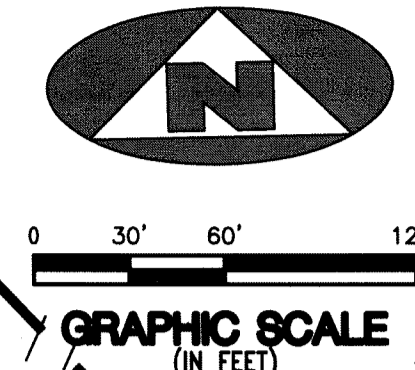
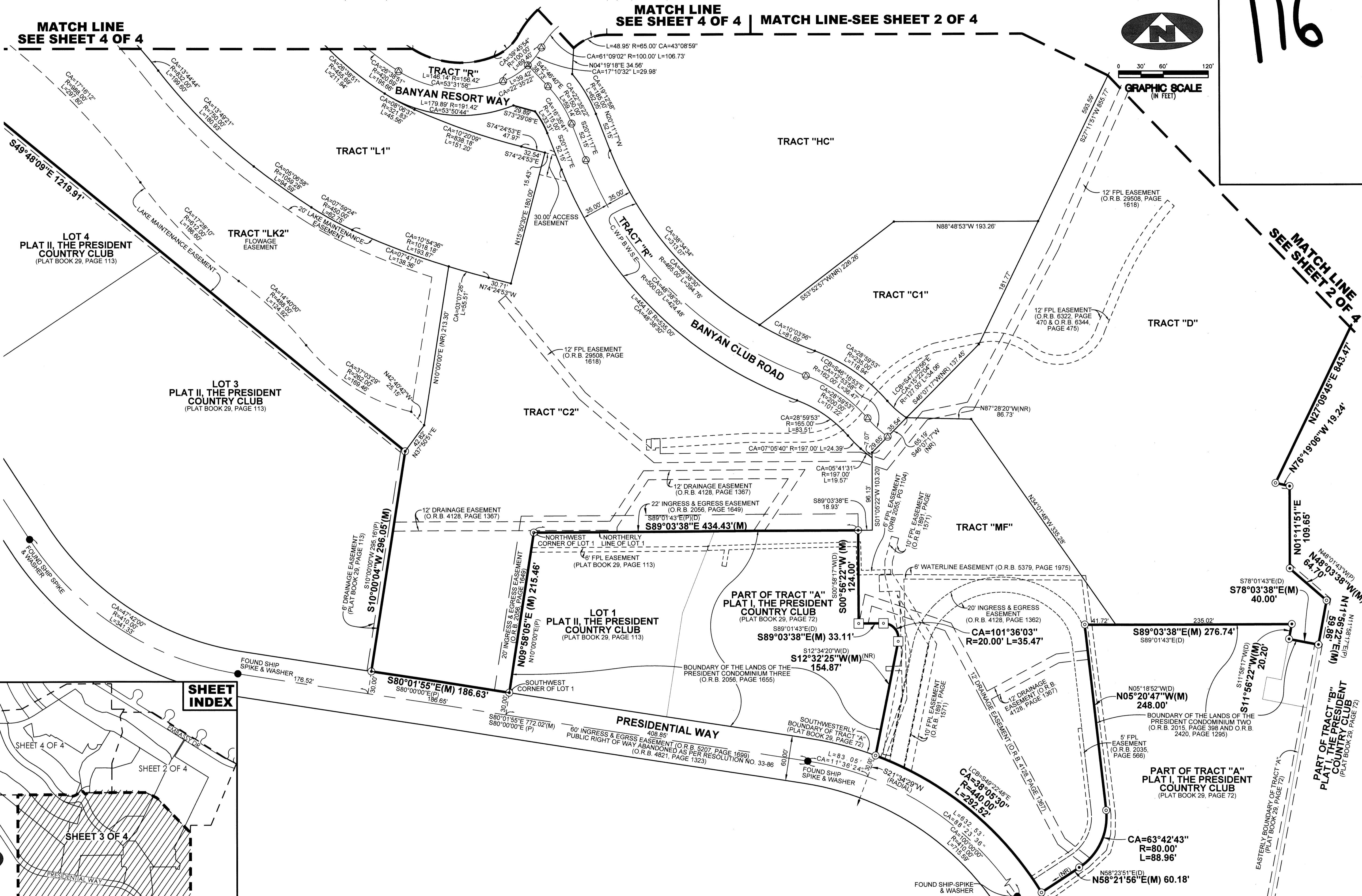


BEING A REPLAT OF A PORTION OF TRACT C, PLAT IV, THE PRESIDENT COUNTRY CLUB, AS RECORDED IN PLAT BOOK 31, PAGE 107, PUBLIC RECORDS, PALM BEACH COUNTY, FLORIDA, ALL OF LOT 2 AND A PORTION OF LOT 5, PLAT II, THE PRESIDENT COUNTRY CLUB, AS RECORDED IN PLAT BOOK 29, PAGE 113, SAID PUBLIC RECORDS, AND PORTIONS OF TRACTS A AND B, PLAT I, THE PRESIDENT COUNTRY CLUB, AS RECORDED IN PLAT BOOK 29, PAGE 72, SAID PUBLIC RECORDS AND LYING IN SECTIONS 7, 8, 17, AND 18, TOWNSHIP 43 SOUTH, RANGE 43 EAST, CITY OF WEST PALM BEACH, PALM BEACH COUNTY, FLORIDA

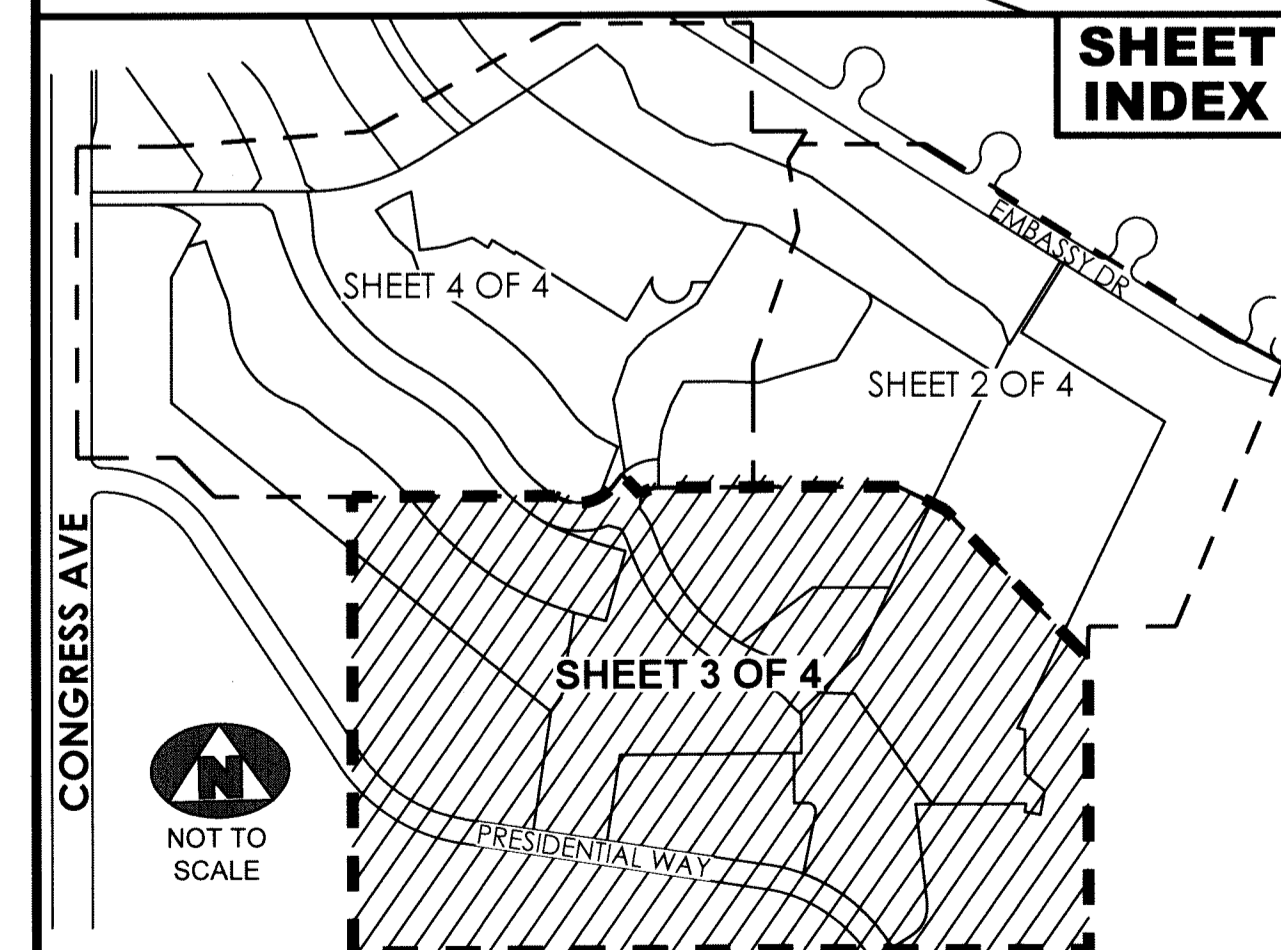
116



MATCH LINE SEE SHEET 4 OF 4

MATCH LINE SEE SHEET 4 OF 4 MATCH LINE-SEE SHEET 2 OF 4

MATCH LINE SEE SHEET 2 OF 4



SHEET INDEX

LEGEND

⊙	DENOTES A SET PERMANENT REFERENCE MONUMENT IRON ROD AND CAP STAMPED "PRM LB7344"	CA	DENOTES CENTRAL ANGLE	(NR)	DENOTES A NON RADIAL LINE
⊙	DENOTES A SET PERMANENT REFERENCE MONUMENT NAIL & WASHER STAMPED "PRM LB7344"	C/L	DENOTES A CENTERLINE	O.M.E.	DENOTES AN OVERHANG AND MAINTENANCE EASEMENT
⊙	DENOTES A SET PERMANENT REFERENCE MONUMENT 4"x4" CONCRETE MONUMENT STAMPED "PRM LB7344"	(D)	DENOTES DEED DISTANCE/DIRECTION	(C.W.P.B.W.S.E.)	DENOTES A CITY OF WEST PALM BEACH WATER AND SEWER EASEMENT
⊙	DENOTES A SET PERMANENT REFERENCE MONUMENT NAIL AND WASHER STAMPED "PCP LB7344"	L	DENOTES ARC LENGTH DISTANCE	(P)	DENOTES PLAT DISTANCE/DIRECTION
		LCB	DENOTES LONG CHORD BEARING	R	DENOTES RADIUS DISTANCE
		(M)	DENOTES MEASURED DISTANCE/DIRECTION		

SURVEYOR'S NOTES

1. THE BEARING BASIS (BASE BEARING), AS SHOWN HEREON, IS BASED ON THE PLATTED BEARING OF SOUTH 01°11'51" WEST, ALONG THE WEST LINE OF TRACT "C", PLAT IV, THE PRESIDENT COUNTRY CLUB, PLAT BOOK 31, PAGE 107, AS SHOWN HEREON, AND ALL OTHER BEARINGS ARE RELATIVE THERETO.
2. IN THOSE INSTANCES WHERE UTILITY OR DRAINAGE STRUCTURES ARE CONSTRUCTED IN CONFLICT WITH THE PLATTED PERMANENT CONTROL POINT POSITION STRADDLERS MONUMENTED AS PERMANENT CONTROL POINTS WILL BE SET TO REFERENCE THE PLATTED POSITION.
3. LINES THAT INTERSECT CURVES ARE RADIAL UNLESS OTHERWISE NOTED.
4. THIS INSTRUMENT WAS PREPARED BY STEPHEN L. SHIRLEY, PROFESSIONAL SURVEYOR AND MAPPER NO. 3918, IN AND FOR THE OFFICES OF ASSOCIATED LAND SURVEYORS, INC., 4152 WEST BLUE HERON BOULEVARD, SUITE 121, RIVIERA BEACH, FLORIDA, 33404.

ASSOCIATED LAND SURVEYORS, INC.
 4152 W. BLUE HERON BLVD. SUITE 121
 RIVIERA BEACH, FLORIDA 33404
 PHONE: (561) 848-2102 FAX: (561) 844-9659
 LB NO. 7344 EMAIL: als@allsurvey.net

SCALE: 1"=60' WO NO.: P1302A
 DWN: BLS SHEET 3 OF 4